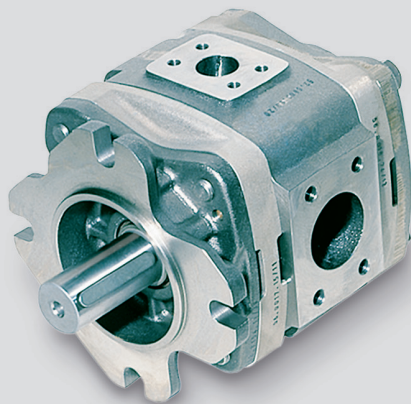
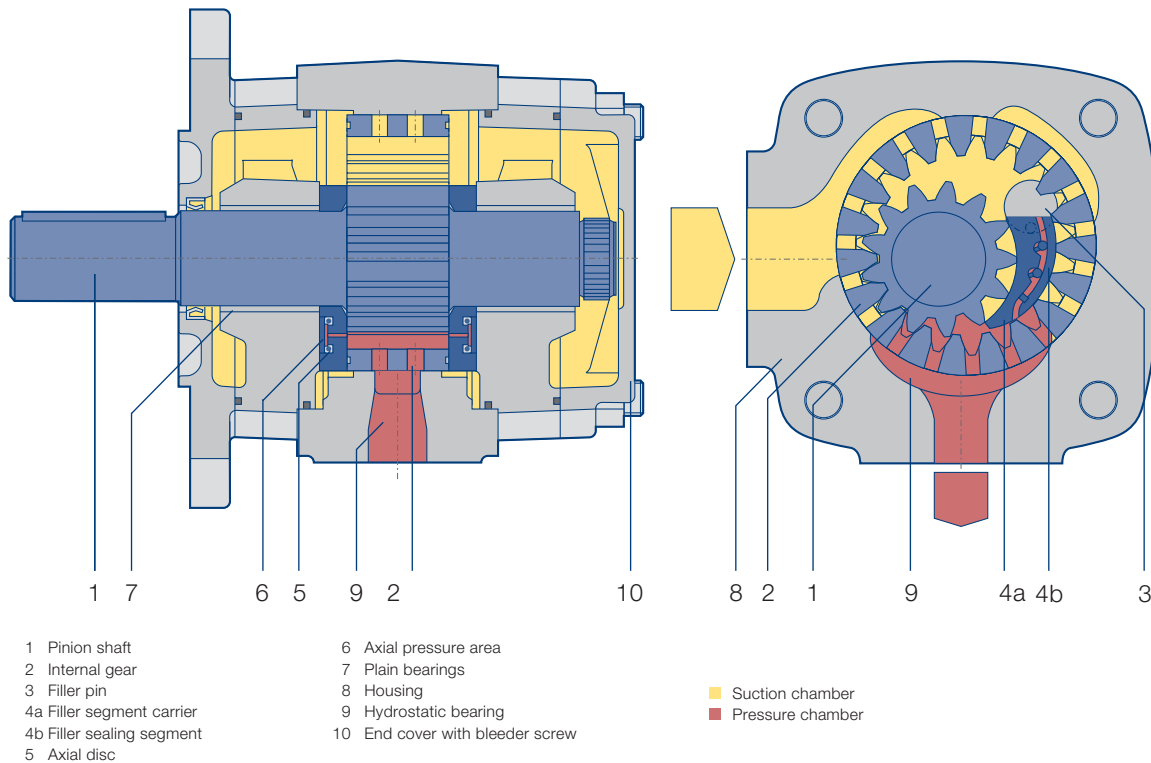


IPVS High-pressure Internal Gear Pumps Technical Data Sheet



Functional Drawing



Function

By rotation of the gears inside the pump, the pressure fluid (usually hydraulic oil) is drawn into the cavity between the pinion and internal gear. Optimized cross-sectional areas on suction side as well as on pressure side allow operation over a wide range of speed.

In the radial direction, the gear chambers are closed by gear meshing and the filler piece. In the axial direction, the axial plates seal the pressure chamber with the minimal possible gap. This design minimizes volume losses and increases efficiency.

Technical Data

Design	internal gear pump with radial and axial sealing gap compensation
Type	IPVS
Mounting types	SAE hole flange; ISO 3019/1 or VDMA hole flange; ISO 3019/2
Line mounting	SAE suction and pressure flange J 518 C Code 61
Sense of rotation	right or left-hand rotation
Mounting position	any
Shaft load	for details of radial and axial drive shaft loads please contact your Voith Turbo H + L Hydraulic representative
Input pressure	0.8 ... 3 bar absolute pressure (at start short time 0.6 bar)
Pressure fluid	HLP mineral oils DIN 51524, part 2 or 3
Viscosity range	10 ... 300 mm ² s ⁻¹ (cSt)
Permissible start viscosity	max. 2 000 mm ² s ⁻¹ (cSt)
Permissible temperature of the pressure fluid	-20 ... + 80 °C
Required purity of the pressure fluid	class 19 / 17 / 14 (ISO 4406), class 8 (NAS 1638)
Filtration	Filtration quotient min. $\beta_{20} \geq 75$, recommended $\beta_{10} \geq 100$ (longer life)
Permissible ambient temperature	-20 ... + 60 °C

Calculations

Pump flow	$Q = V_{g,th} \cdot n \cdot \eta_v \cdot 10^{-3}$ [l/min]
Power	$P = \frac{Q \cdot \Delta p}{600 \cdot \eta_g}$ [kW]
$V_{g,th}$	Pump volume per revolution [cm ³]
n	Speed [min ⁻¹]
η_v	Volumetric efficiency
η_g	Overall efficiency
Δp	Differential pressure [bar]

Characteristics

Type, size-delivery	Displacment per revolution [cm ³]	Speed		Delivery		Pressures		
		min.	max.	at 1800 min ⁻¹	Continuous	Peak at 1800 min ⁻¹	Peak at n _{max}	Inertia
		[min ⁻¹]	[min ⁻¹]	[l/min]	[bar]	[bar]	[bar]	[kg cm ²]
IPVS 3 – 3.5	3.6	400	3600	5.4	345	420	330	0.34
IPVS 3 – 5	5.2	400	3600	7.8	345	420	330	0.42
IPVS 3 – 6.3	6.4	400	3600	9.6	345	420	330	0.49
IPVS 3 – 8	8.2	400	3600	12.3	345	420	330	0.58
IPVS 3 – 10	10.2	400	3600	15.3	345	420	330	0.70
IPVS 4 – 13	13.3	400	3600	19.9	345	420	330	2.25
IPVS 4 – 16	15.8	400	3400	23.7	345	420	330	2.64
IPVS 4 – 20	20.7	400	3200	31.0	345	420	330	3.29
IPVS 4 – 25	25.4	400	3000	38.1	315	380	300	3.70
IPVS 4 – 32	32.6	400	2800	48.9	280	330	250	4.44
IPVS 5 – 32	33.1	400	3000	49.6	345	420	315	8.62
IPVS 5 – 40	41.0	400	2800	61.5	330	380	315	10.20
IPVS 5 – 50	50.3	400	2500	75.4	300	345	280	11.60
IPVS 5 – 64	64.9	400	2200	97.3	265	300	230	14.40
IPVS 6 – 64	64.1	400	2600	96.1	345	420	300	25.73
IPVS 6 – 80	80.7	400	2400	121.0	330	380	280	30.90
IPVS 6 – 100	101.3	400	2100	151.9	300	345	250	36.10
IPVS 6 – 125	126.2	400	1800	189.3	265	300	265	43.70
IPVS 7 – 125	125.8	400	2200	188.7	345	420	300	84.05
IPVS 7 – 160	160.8	400	2000	241.2	330	380	280	102.60
IPVS 7 – 200	202.7	400	1800	304.0	300	345	300	119.00
IPVS 7 – 250	251.7	400	1800	377.5	265	300	265	144.50

The values given apply for:

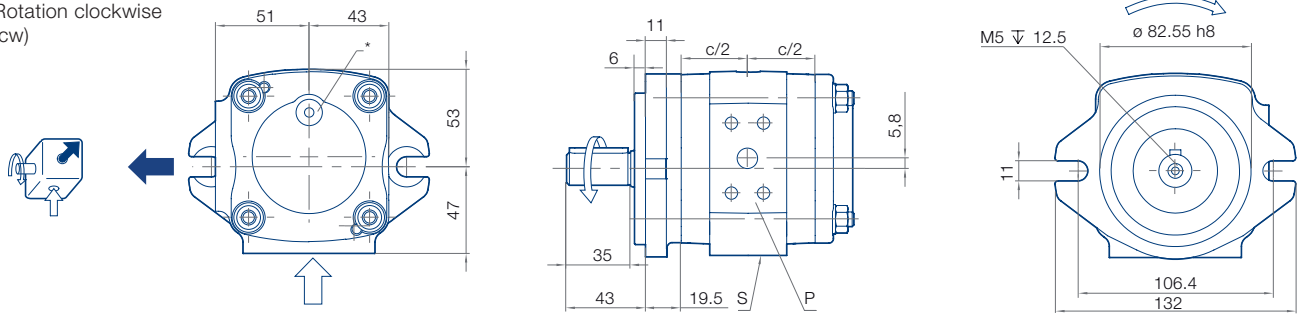
- Pumping of mineral oils with a viscosity of 20 ... 40 mm² s⁻¹
- An input pressure of 0.8...3.0 bar absolute

Notes:

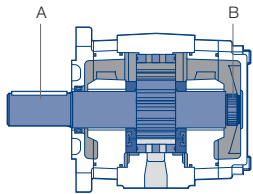
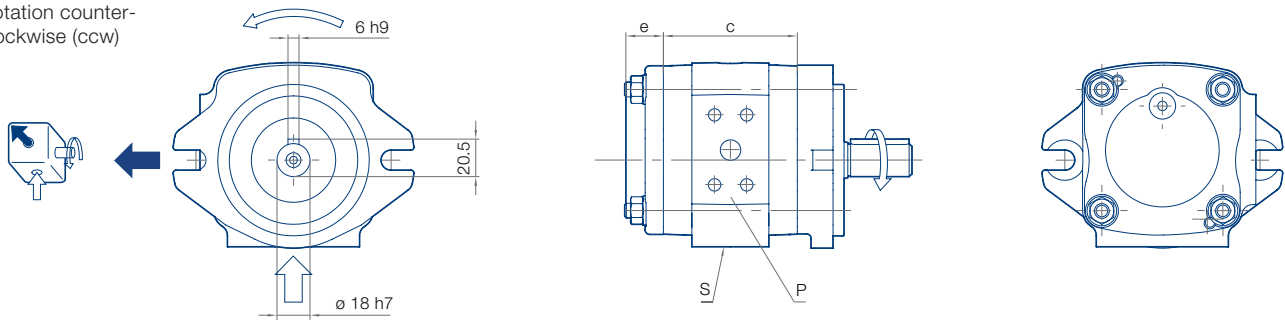
- Peak pressures apply for 15% of operating time with a maximum cycle time of 1 minute
- Please inquire about peak pressures at non-standard speeds
- Due to production tolerances, the pump volume may be reduced by up to 1.5%.

IPVS 3, Rotation and Dimensions (mounting flange[0], shaft end[1])

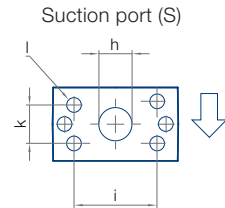
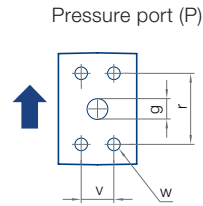
Rotation clockwise (cw)



Rotation counter-clockwise (ccw)



Allowed input torques:
 Input shaft A: 160 Nm
 Secondary shaft B: 80 Nm



Type/ Delivery	Dimensions and Weight											SAE Flange No.	
	c	e	g	h	i	k	l	r	v	w	Weight	↑	↓
	[mm]	[mm]	[mm]	[mm]	[mm]	[mm]	Thread	[mm]	[mm]	Thread	[kg]		
IPVS 3 – 3.5	66	20.5	9	14	38.1	17.5	M8x13	40.5	18.2	M8x15	4.2	50	10
IPVS 3 – 5	70	20.5	11	14	38.1	17.5	M8x13	40.5	18.2	M8x15	4.4	50	10
IPVS 3 – 6.3	73	20.5	11	19	47.6	22.3	M10x15	40.5	18.2	M8x15	4.6	50	11
IPVS 3 – 8	77.5	20.5	13	19	47.6	22.3	M10x15	40.5	18.2	M8x15	4.8	50	11
IPVS 3 – 10	82.5	20.5	13	21	52.4	26.2	M10x15	40.5	18.2	M8x15	5.0	50	12

* Ensure the M10x1 plug screw, hexagon socket SW5, is tightened to a torque of 10 Nm during pumping operation. Dependent on the pump position, filling or ventilation is possible here prior to commissioning.

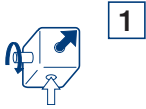
Rotation, Suction port

Mounting flange

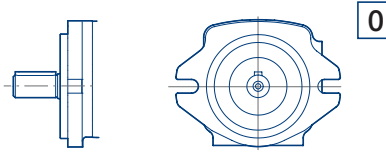
Shaft end

Standard

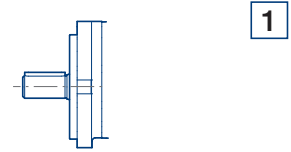
Rotation clockwise,
Suction port pump



SAE 2-hole flange

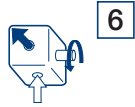


Keyway connection

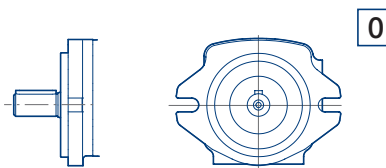


Variant

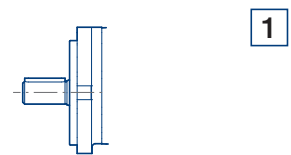
Rotation counterclockwise,
Suction port pump



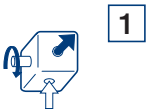
SAE 2-hole flange



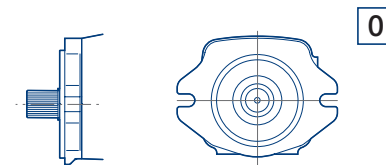
Keyway connection



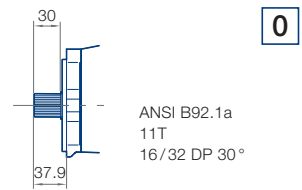
Rotation clockwise*,
Suction port pump



SAE 2-hole flange



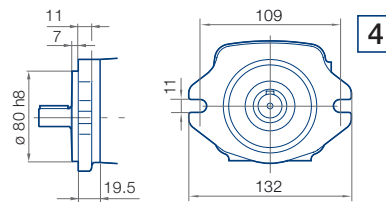
Involute gearing



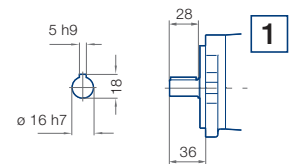
Rotation counterclockwise*,
Suction port pump



VDMA-2-hole flange



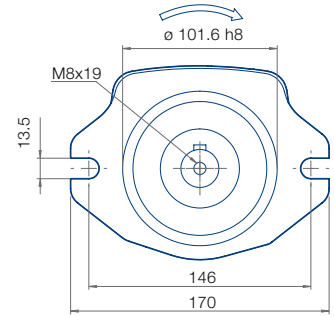
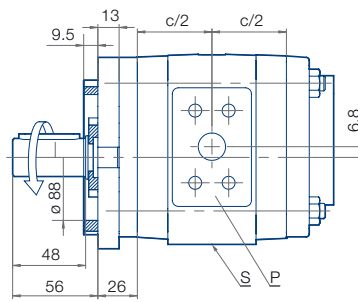
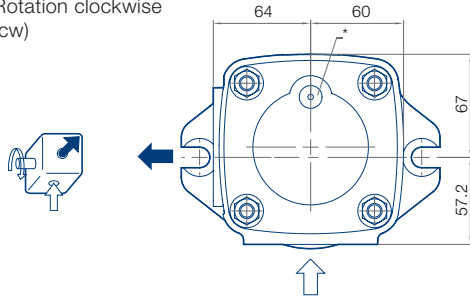
Keyway connection



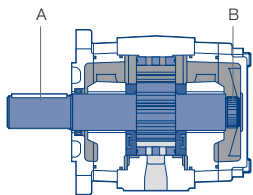
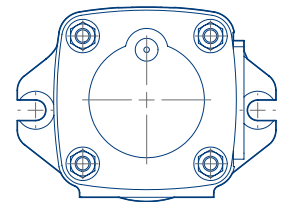
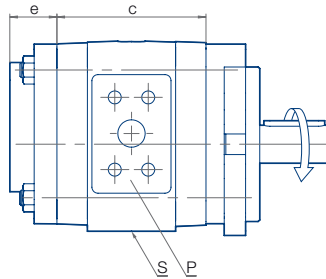
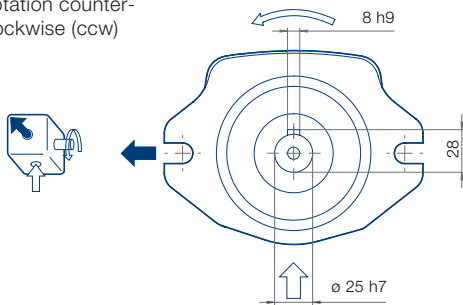
* Direction of rotation free selectable in the illustrated mounting flange / shaft end combination.

IPVS 4, Rotation and Dimensions (mounting flange [7], shaft end [1])

Rotation clockwise (cw)

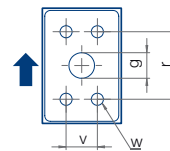


Rotation counter-clockwise (ccw)

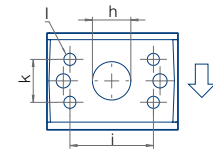


Allowed input torques:
 Input shaft A: 335 Nm
 Secondary shaft B: 190 Nm

Pressure port (P)



Suction port (S)



Type/ Delivery	Dimensions and Weight											SAE Flange No.	
	c	e	g	h	i	k	l	r	v	w	Weight	↑	↓
	[mm]	[mm]	[mm]	[mm]	[mm]	[mm]	Thread	[mm]	[mm]	Thread	[kg]		
IPVS 4 – 13	88.5	31	13	23	52.4	26.2	M10x15	40.5	18.2	M8x15	9.4	50	12
IPVS 4 – 16	92.5	31	14	25	52.4	26.2	M10x15	40.5	18.2	M8x15	9.7	50	12
IPVS 4 – 20	98	31	18	27	58.7	30.2	M10x15	50.8	23.8	M10x17	10.2	51	13
IPVS 4 – 25	104	31	18	30	58.7	30.2	M10x15	50.8	23.8	M10x17	10.7	51	13
IPVS 4 – 32	113	31	18	32	58.7	30.2	M10x15	50.8	23.8	M10x17	11.7	51	13

* Ensure the M10x1 plug screw, hexagon socket SW5, is tightened to a torque of 10 Nm during pumping operation. Dependent on the pump position, filling or ventilation is possible here prior to commissioning.

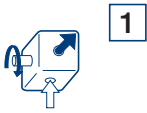
Rotation, Suction port

Mounting flange

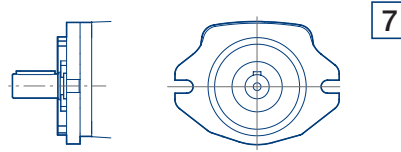
Shaft end

Standard

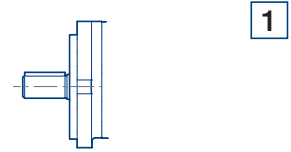
Rotation clockwise,
Suction port pump



SAE 2-hole flange

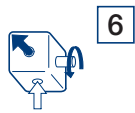


Keyway connection

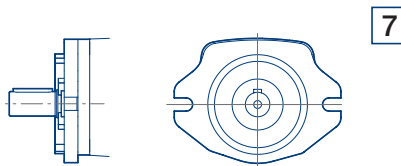


Variant

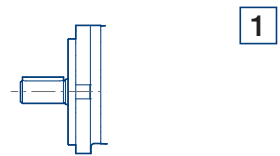
Rotation counterclockwise,
Suction port pump



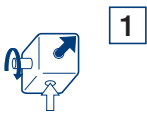
SAE 2-hole flange



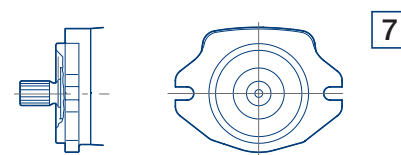
Keyway connection



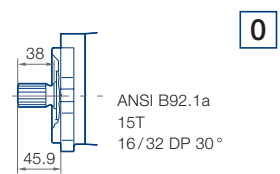
Rotation clockwise*,
Suction port pump



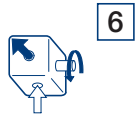
SAE 2-hole flange



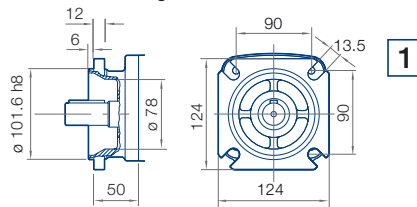
Involute gearing



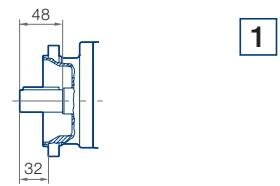
Rotation counterclockwise*,
Suction port pump



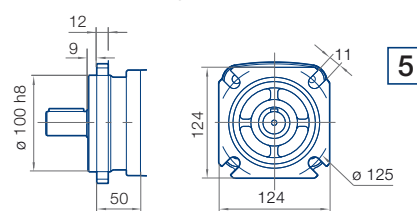
SAE-4-hole flange



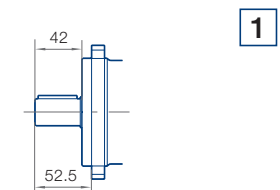
Keyway connection



VDMA-4-hole flange



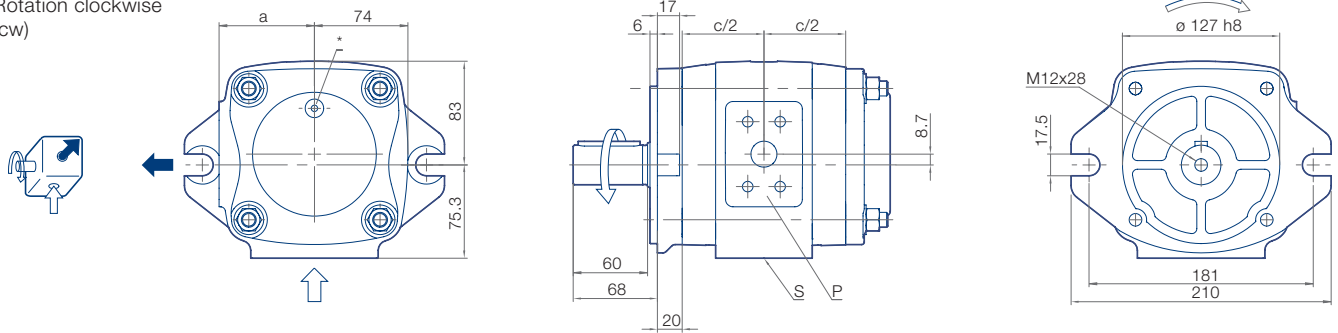
Keyway connection



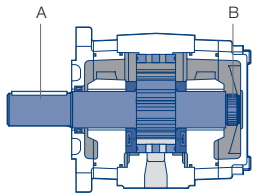
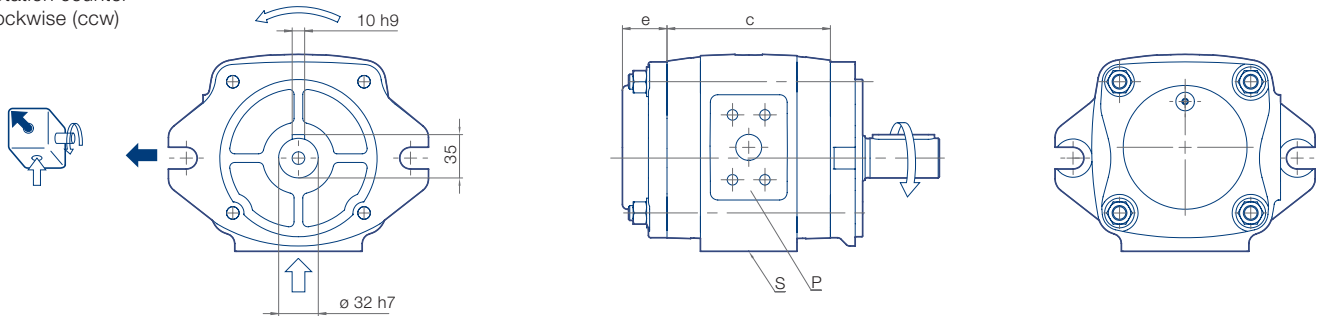
* Direction of rotation free selectable in the illustrated mounting flange / shaft end combination.

IPVS 5, Rotation and Dimensions (mounting flange [0], shaft end [1])

Rotation clockwise (cw)

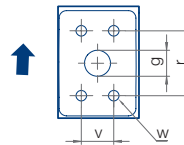


Rotation counter-clockwise (ccw)

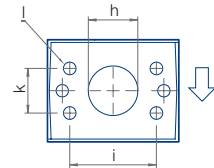


Allowed input torques:
 Input shaft A: 605 Nm
 Secondary shaft B: 400 Nm

Pressure port (P)



Suction port (S)



Type/ Delivery	Dimensions and Weight												SAE Flange No.	
	a	c	e	g	h	i	k	l	r	v	w	Weight	↑	↓
	[mm]	[mm]	[mm]	[mm]	[mm]	[mm]	[mm]	Thread	[mm]	[mm]	Thread	[kg]		
IPVS 5 – 32	77	119	36	18	32	58.7	30.2	M10x15	50.8	23.8	M10x16.5	15.6	51	13
IPVS 5 – 40	77	125	36	19	35	69.9	35.7	M12x20	50.8	23.8	M10x16.5	16.7	51	30
IPVS 5 – 50	83	132	36	21	40	69.9	35.7	M12x20	57.2	27.8	M12x22	17.3	52	30
IPVS 5 – 64	83	143	36	23	40	69.9	35.7	M12x20	57.2	27.8	M12x22	19.1	52	30

* Ensure the M10x1 plug screw, hexagon socket SW5, is tightened to a torque of 10 Nm during pumping operation. Dependent on the pump position, filling or ventilation is possible here prior to commissioning.

Note! In case of oil-immersed installation of the oil pump flange variant 0 can not be used. For this special case, the flange version 7 will be used.

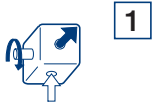
Rotation, Suction port

Mounting flange

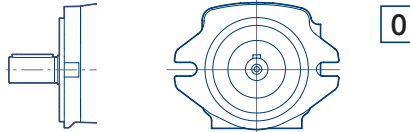
Shaft end

Standard

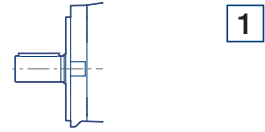
Rotation clockwise, Suction port pump



SAE 2-hole flange

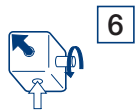


Keyway connection

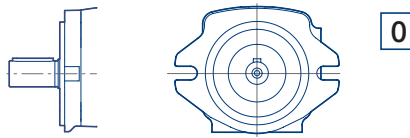


Variant

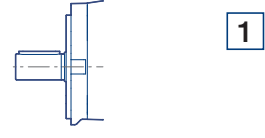
Rotation counterclockwise, Suction port pump



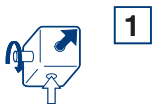
SAE 2-hole flange



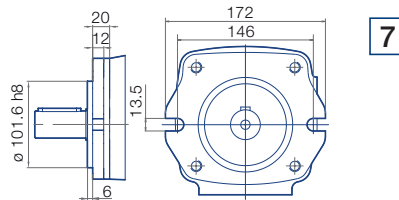
Keyway connection



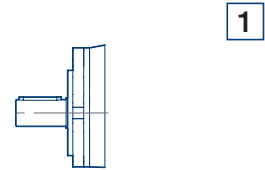
Rotation clockwise*, Suction port pump



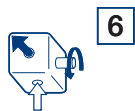
SAE 2-hole flange



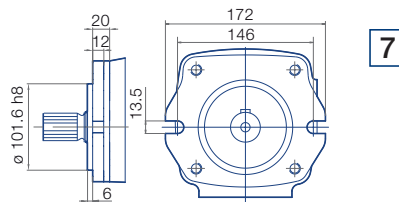
Keyway connection



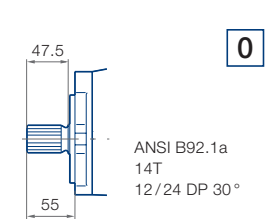
Rotation counterclockwise*, Suction port pump



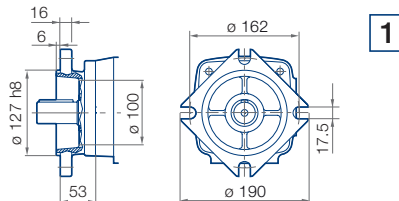
SAE 2-hole flange



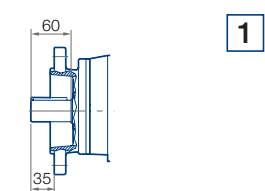
Involute gearing



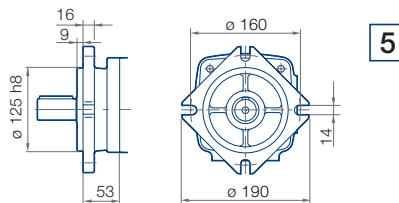
SAE-4-hole flange



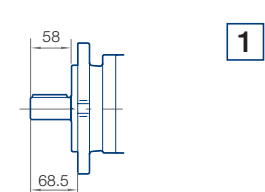
Keyway connection



VDMA-4-hole flange



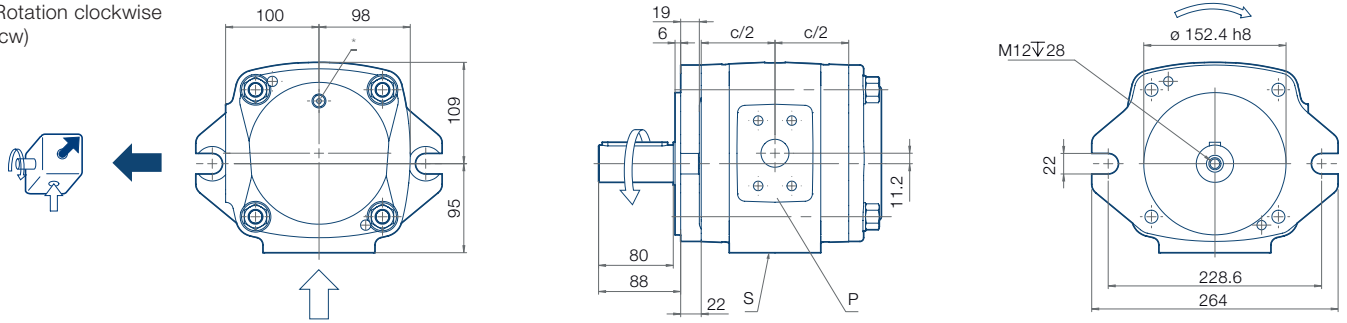
Keyway connection



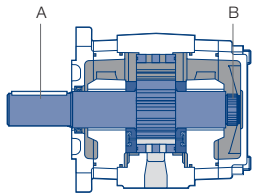
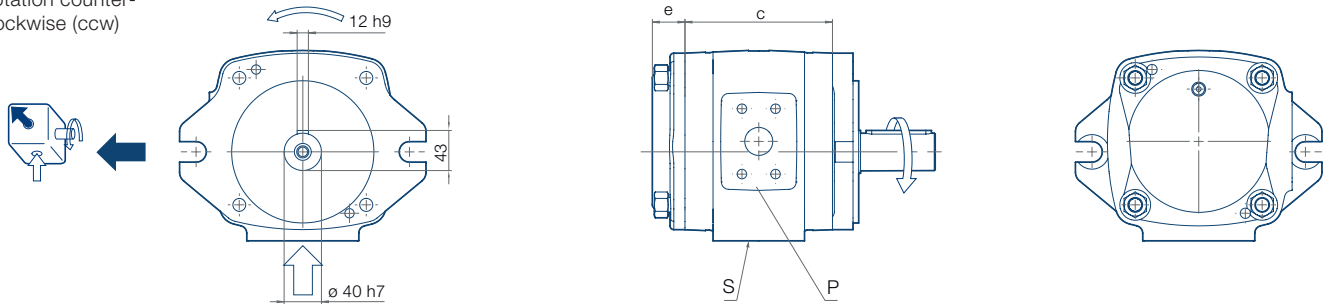
* Direction of rotation free selectable in the illustrated mounting flange / shaft end combination.

IPVS 6, Rotation and Dimensions (mounting flange [0], shaft end [1])

Rotation clockwise (cw)



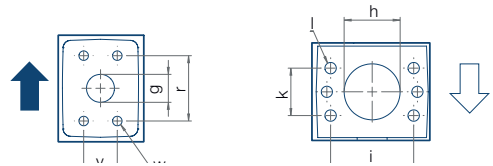
Rotation counter-clockwise (ccw)



Allowed input torques:
 Input shaft A: 1050 Nm
 Secondary shaft B: 780 Nm

Pressure port (P)

Suction port (S)



Type/ Delivery	Dimensions and Weight											SAE Flange No.	
	c	e	g	h	i	k	l	r	v	w	Weight	↑	↓
	[mm]	[mm]	[mm]	[mm]	[mm]	[mm]	Thread	[mm]	[mm]	Thread	[kg]		
IPVS 6 – 64	140	40	23	40	69.9	35.7	M12x20	57.2	27.8	M12x22	30.0	52	30
IPVS 6 – 80	148	35	23	45	77.8	42.9	M12x20	66.6	31.8	M14x24	31.7	53a	15
IPVS 6 – 100	158	35	27	50	77.8	42.9	M12x20	66.6	31.8	M14x24	33.0	53a	15
IPVS 6 – 125	170	40	30	50	77.8	42.9	M12x20	66.6	31.8	M14x24	36.0	53a	15

* Ensure the M10x1 plug screw, hexagon socket SW5, is tightened to a torque of 10 Nm during pumping operation. Dependent on the pump position, filling or ventilation is possible here prior to commissioning.

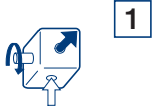
Rotation, Suction port

Mounting flange

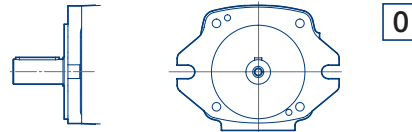
Shaft end

Standard

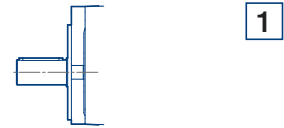
Rotation clockwise, Suction port pump



SAE 2-hole flange

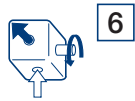


Keyway connection

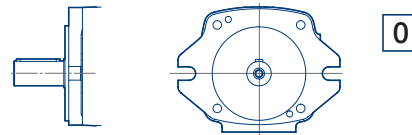


Variant

Rotation counterclockwise, Suction port pump



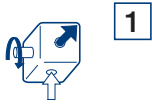
SAE 2-hole flange



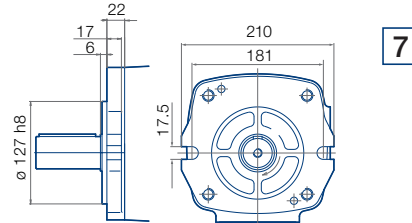
Keyway connection



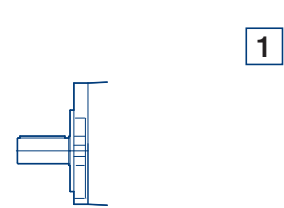
Rotation clockwise*, Suction port pump



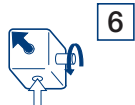
SAE 2-hole flange



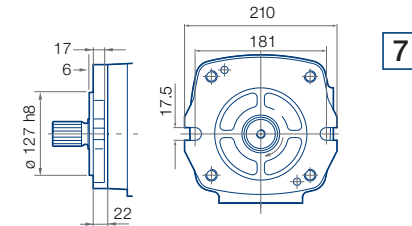
Keyway connection



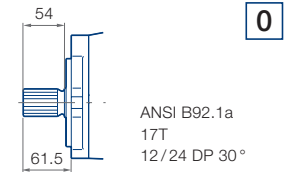
Rotation counterclockwise*, Suction port pump



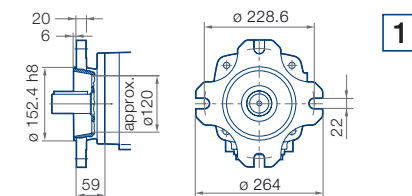
SAE 2-hole flange



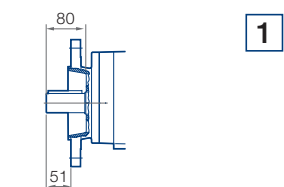
Involute gearing



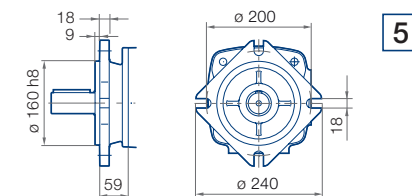
SAE-4-hole flange



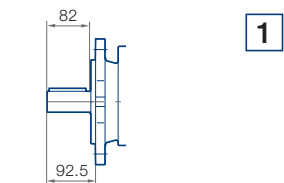
Keyway connection



VDMA-4-hole flange



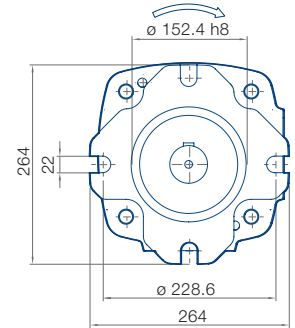
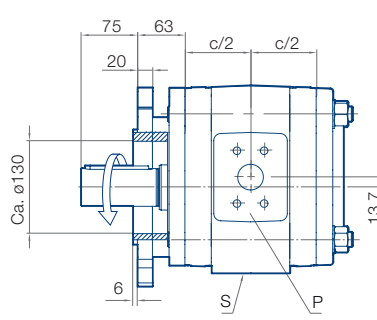
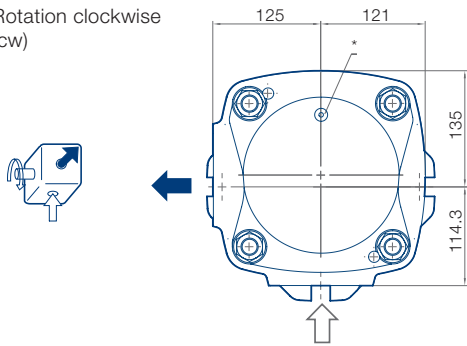
Keyway connection



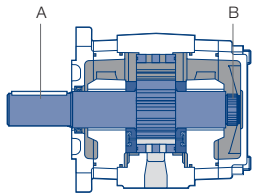
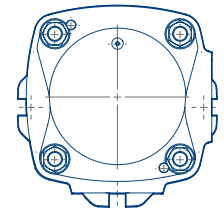
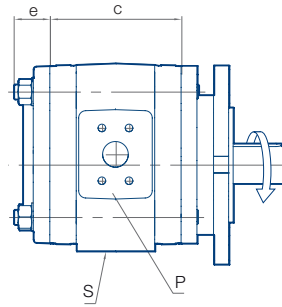
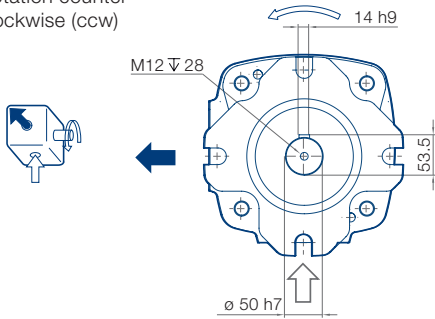
* Direction of rotation free selectable in the illustrated mounting flange / shaft end combination.

IPVS 7, Rotation and Dimensions (mounting flange¹, shaft end¹)

Rotation clockwise (cw)

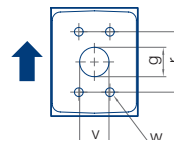


Rotation counter-clockwise (ccw)

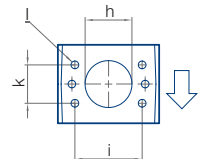


Allowed input torques:
 Input shaft A: 1960 Nm
 Secondary shaft B: 1200 Nm

Pressure port (P)



Suction port (S)



Type/ Delivery	Dimensions and Weight											SAE Flange No.	
	c	e	g	h	i	k	l	r	v	w	Weight	↑	↓
	[mm]	[mm]	[mm]	[mm]	[mm]	[mm]	Thread	[mm]	[mm]	Thread	[kg]		
IPVS 7 – 125	152	48	30	50	77.8	42.9	M12x20	66.6	31.8	M14x24	46.5	53a	15
IPVS 7 – 160	162	48	30	56	88.9	50.8	M12x20	66.6	31.8	M14x24	50	53a	16
IPVS 7 – 200	174	46	34	62	88.9	50.8	M12x20	79.3	36.5	M16x26	54	54	16
IPVS 7 – 250	188	42	38	72	106.4	61.9	M16x25	79.3	36.5	M16x26	59	54	17

* Ensure the M10x1 plug screw, hexagon socket SW5, is tightened to a torque of 10 Nm during pumping operation. Dependent on the pump position, filling or ventilation is possible here prior to commissioning.

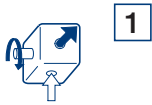
Rotation, Suction port

Mounting flange

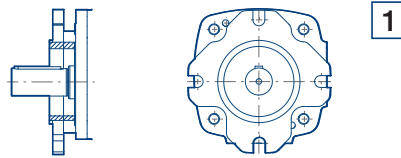
Shaft end

Standard

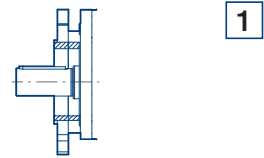
Rotation clockwise,
Suction port pump



SAE-4-hole flange

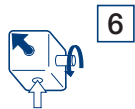


Keyway connection

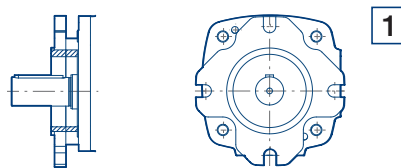


Variant

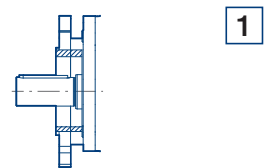
Rotation counterclockwise,
Suction port pump



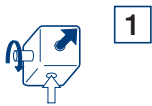
SAE-4-hole flange



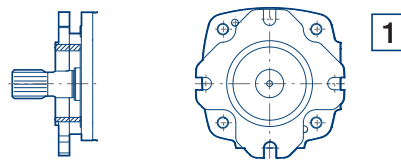
Keyway connection



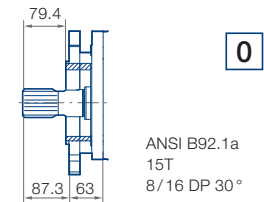
Rotation clockwise*,
Suction port pump



SAE-4-hole flange

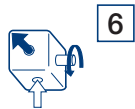


Involute gearing

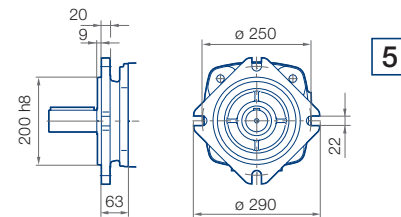


ANSI B92.1a
15T
8/16 DP 30°

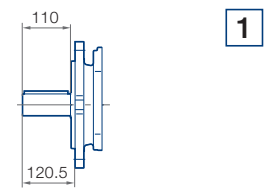
Rotation counterclockwise*,
Suction port pump



VDMA-4-hole flange

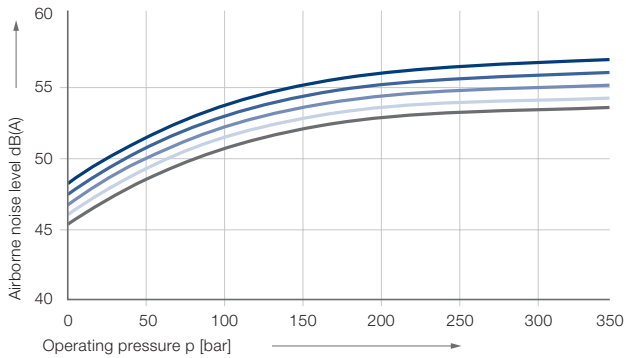


Keyway connection



* Direction of rotation free selectable in the illustrated mounting flange / shaft end combination.

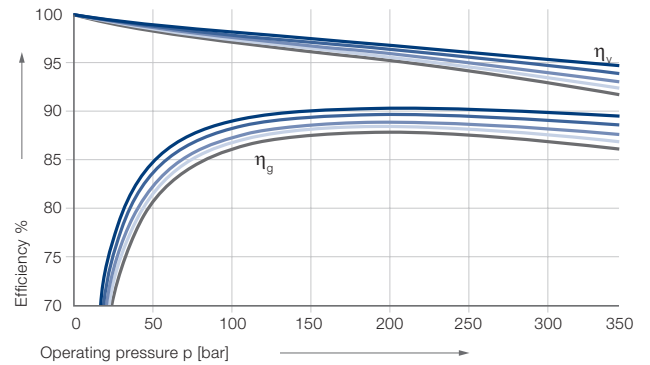
IPVS 3 – Airborne noise level (measuring point 1 m axial)



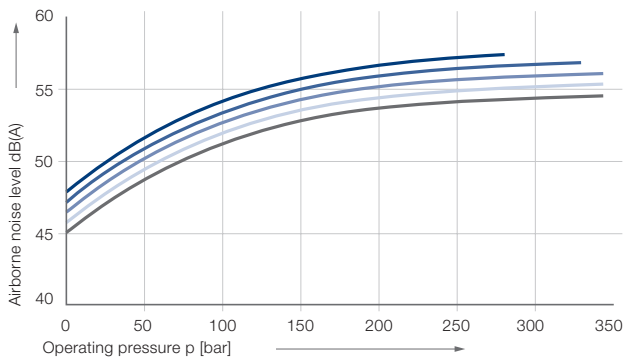
Characteristic curves:

— IPV 3 – 10 — IPVS 3 – 8 — IPVS 3 – 6.3 — IPVS 3 – 5 — IPVS 3 – 3.5

IPVS 3 – Efficiency η_v and η_g



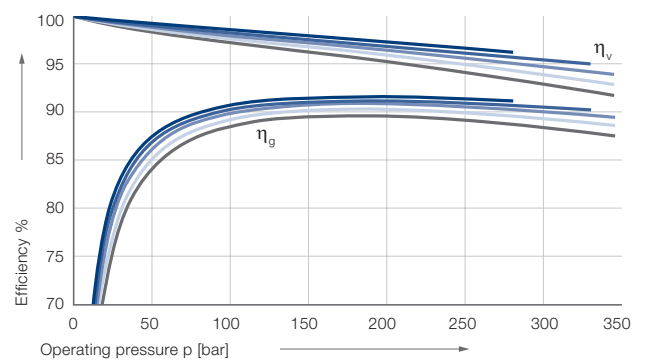
IPVS 4 – Airborne noise level (measuring point 1 m axial)



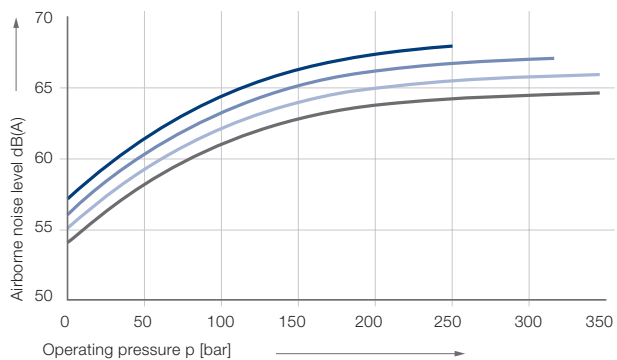
Characteristic curves:

— IPVS 4 – 32 — IPVS 4 – 25 — IPVS 4 – 20 — IPVS 4 – 16 — IPVS 4 – 13

IPVS 4 – Efficiency η_v and η_g



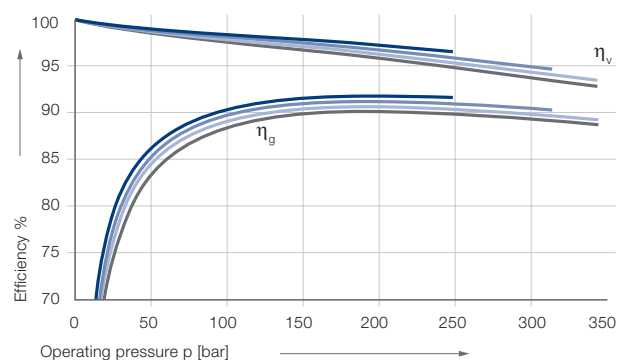
IPVS 5 – Airborne noise level (measuring point 1 m axial)



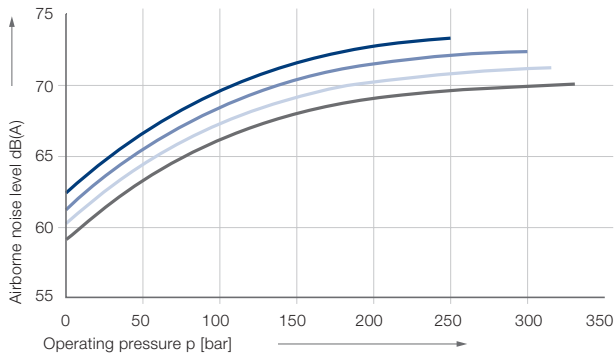
Characteristic curves:

— IPVS 5 – 64 — IPVS 5 – 50 — IPVS 5 – 40 — IPVS 5 – 32

IPVS 5 – Efficiency η_v and η_g



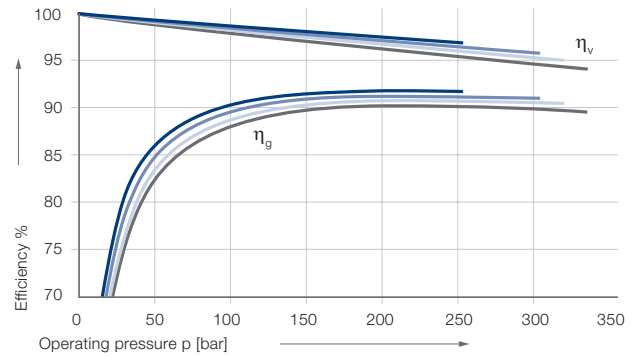
IPVS 6 – Airborne noise level (measuring point 1 m axial)



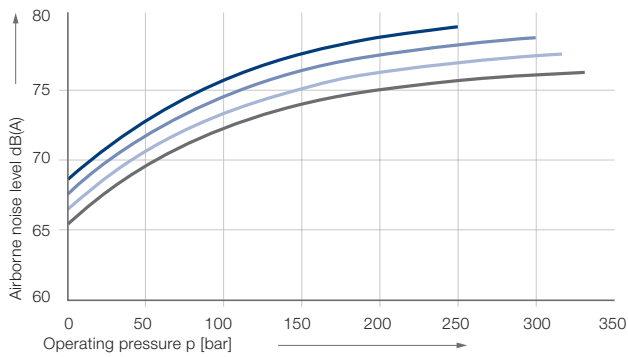
Characteristic curves:

— IPVS 6 – 125 — IPVS 6 – 100 — IPVS 6 – 80 — IPVS 6 – 64

IPVS 6 – Efficiency η_v and η_g



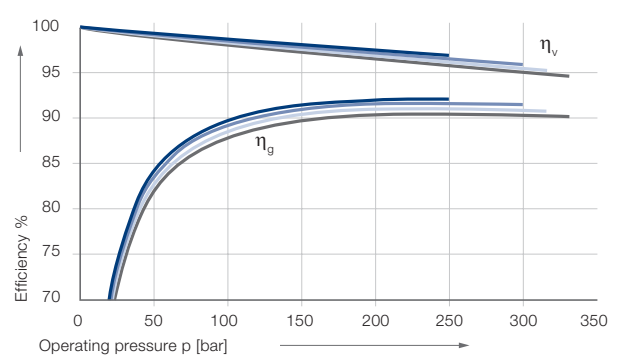
IPVS 7 – Airborne noise level (measuring point 1 m axial)



Characteristic curves:

— IPVS 7 – 250 — IPVS 7 – 200 — IPVS 7 – 160 — IPVS 7 – 125

IPVS 7 – Efficiency η_v and η_g



Measurement conditions:

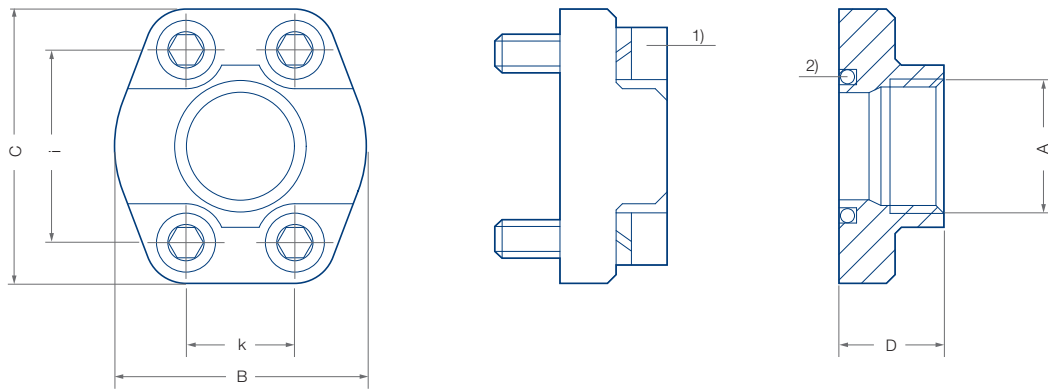
Speed: 1500 min⁻¹ / Viscosity of pressure fluid: 46 mm²s⁻¹ / Operating temperature: 40 °C

Note:

Measurement taken in a low-noise room.

In a anechoic room, the measurements are approx. 5 dB(A) lower.

SAE Suction and Pressure Flanges according to SAE J 518 C Code 61, SAE flange single-piece



SAE flange no.	A	B	C	D	E ¹⁾	i	k	S ²⁾	max. pressure	
	thread	[mm]	[mm]	[mm]	seal ring	[mm]	[mm]	thread	[bar]	
SAE J 518 C Code 61	10	G ½	46	54	36	18.66 – 3.53	38.1	17.5	M 8	345
	11	G ¾	50	65	36	24.99 – 3.53	47.6	22.3	M 10	345
	12	G 1	55	70	38	32.92 – 3.53	52.4	26.2	M 10	345
	13	G 1-¼	68	79	41	37.69 – 3.53	58.7	30.2	M 10	276
	14 ³⁾	G 1-½	82	98	50	47.22 – 3.53	69.9	35.7	M 12	345 ³⁾
	30	G 1-½	78	93	45	47.22 – 3.53	69.9	35.7	M 12	207
	15	G 2	90	102	45	56.74 – 3.53	77.8	42.9	M 12	207
	16	G 2-½	105	114	50	69.44 – 3.53	88.9	50.8	M 12	172
	17	G 3	124	134	50	85.32 – 3.53	106.4	61.9	M 16	138
	18	G 4	146	162	48	110.72 – 3.53	130.2	77.8	M 16	34
SAE J 518 C Code 62	50	G ½	46	54	36	18.66 -3.35	40.5	18.2	M 8	414
	51	G ¾	55	71	35	24.99 - 3.53	50.8	23.8	M 10	414
	52	G 1	65	81	42	32.92 - 3.53	57.2	27.8	M 12	414
	53a	G 1-¼	78	95	45	37.69 - 3.53	66.6	31.8	M 14	414
	54	G 1-½	94	112	112	47.22 – 3.53	79.3	36.5	M 16	414

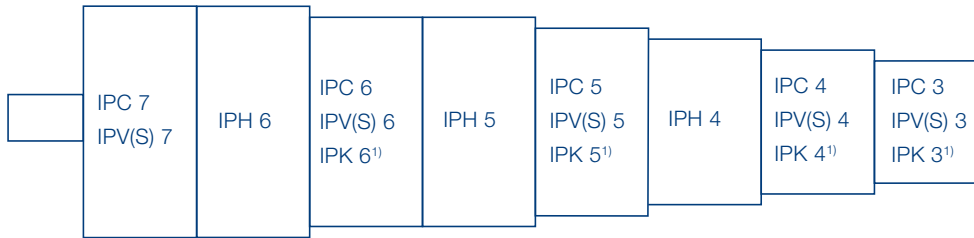
Wrench torque for screws according to ISO 6162

¹⁾ Round seal ring (O-Ring) ISO-R 1629 NBR

²⁾ Screw EN ISO 4762

³⁾ Special design, deviation from SAE J 518 C Code 61

Multi-flow Pumps, Pump Combinations, in order of type and size



¹⁾ Following an IPK pump it is not possible to fit a pump of the series IPVS, IPC or IPH.

Combinations of IPVS pumps

- IPVS pumps of identical or different sizes can be combined in multiflow pumps.
- All sizes of the relevant pump volume are available as two- or three-flow pumps; four-flow pumps must be designed by Voith Turbo H + L Hydraulic.
- The pumps are arranged in increasing order according to frame size and delivery.

Selection

1. Determine pressure ranges and define the appropriate pump serie(s).
2. Determine pump volume and select the appropriate size(s).
3. Define sequence of the pumps.
4. Check the torques.
5. Determine rotation and suction.
6. Specify mounting flange and shaft end.

Combinations of IPVS/IP...-pumps

- It is possible to combine IPVS pumps with other Voith Turbo H + L Hydraulic pump series (e.g. medium-pressure pumps IPC or low-pressure pumps IPK).
- The pumps are arranged by types and sizes as shown in the illustration above.
- If identical types or identical sizes follow each other, the pump with the higher pump flow is placed closer to the drive.




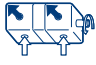








Mounting, assembly

- Multi-flow pumps are generally mounted to the drive by means of a flange. All information about the flange design and shaft end is found in the catalog of the relevant pump series.
- For more information, for example about definition of the adapter housings, refer to brochure Multi-flow pumps.

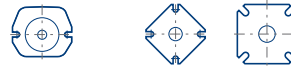
Designs

Rotation and suction

clockwise (cw)   counterclockwise (ccw)

	2	7	
	1	6	
	2	7	
	1	6	
	3	8	
	3	8	
Special design	4	9	Special design

Mounting flange



0 **1**

4 **5**

7

For designs and dimensions, see catalog of the relevant pump series.

0 SAE 2-hole flange

1 SAE-4-hole flange

4 VDMA-2-hole flange

5 VDMA-4-hole flange

7 SAE 2-hole flange (variant)

Shaft end



1

0

For designs and dimensions, see catalog of the relevant pump series.

Type Code

IPVS 3 - 3.5 1 0 1

Shaft end

- 0 Splined gear shaft ANSI B92.1a
- 1 Parallel shaft with keyway

Mounting flange

- 0 SAE-2-hole
- 1 SAE-4-hole
- 4 VDMA-2-hole
- 5 VDMA-4-hole
- 7 SAE-2-hole, variant

Rotation, Suction port

- 1 Clockwise rotation, suction port pump
- 6 Anti-clockwise rotation, suction port pump
- 4 Clockwise rotation, special design
- 9 Anti-clockwise rotation, special design

Delivery

Size	Delivery				
3	3.5	5	6.3	8	10
4	13	16	20	25	32
5	32	40	50	64	
6	64	80	100	125	
7	125	160	200	250	

Size

Type

This is a translated document. Original language: german.
Legally binding language version of document: german.

Voith Turbo H+L Hydraulic GmbH & Co. KG
Schuckertstraße 15
71277 Rutesheim, Germany
Tel. +49 7152 992 3
Fax +49 7152 992 400
sales-rut@voith.com
www.voith.com/hydraulic-systems

